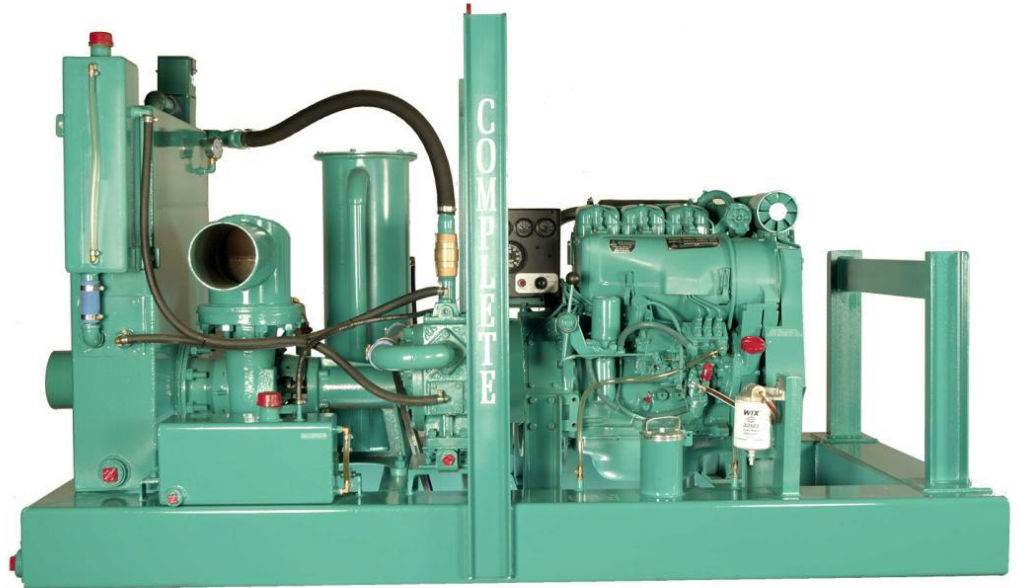


The Complete AutoPrime™ Wellpoint Pump has been the industry standard for wellpoint and sock underdrain dewatering since 1923. Our VAWP series integrates our unique vacuum system with high performance centrifugal pumps for maximum performance in air handling and water volume. The rotary vane vacuum system used in our wellpoint pumps is independent of the centrifugal pump, with no cross contamination to wear on vacuum pump tolerances. Available in sizes from 4" to 10", diesel or electric powered.



Model*	4VAWP	6VAWP	8VAWP	10VAWP
Suction / Discharge	6" x 4"	6" x 6"	8" x 8"	10" x 10"
Max. Flow Rate (GPM)	700	1,400	2,700	4,400
Max. TDH (ft.)	55'	80'	95'	80'
Vacuum Pump model	C3-OF	C5W-OF	C10W-OF	C10W-OF
Vacuum Pump Flow (cfm)	63	130	200	200
Fuel Capacity (gallons)	52	62	62	72
Engine Model**	Deutz D2011L03	Deutz D914L03	Deutz D914L04	Deutz D914L06
Horsepower	32 @ 1,800	45 @ 1,800	59 @ 1,800	95 @ 1,800
Size L x W x H (inches)	75 x 40 x 60	98 x 50 x 70	98 x 50 x 70	124 x 50 x 70
Dry Weight (pounds)	2,200	3,200	3,600	5,000

*Specify model VAWP = Vacuum Assist WellPoint Pump

**other engines available

“The finest dewatering pumps and wellpoint equipment since 1923”

Wellpoint Pumps (VAWP) 4 to 10 inch discharge units



Standard Features:

- Pumping flow rate to 4,400 GPM; Heads to 95 ft. TDH.
- Complete Vacuum Assist System with a high volume rotary vane liquid cooled vacuum pump (air cooled on the 4VAWP)
- Large steel air / water separation tank with automatic peeler valve assembly
- Closed loop vacuum oil recovery system with cyclonic vacuum oil reclaimer (exhaust filter optional)
- High performance cast iron centrifugal pumps
- Lockable fuel cap, Battery hold-down, Single point lifting bail, Discharge check valve, and Volute drain
- Skid mounted integral fuel tank sized for 18-24hr run time; clean out ports at all four corners
- Standardized parts across all sizes
- Full instrumentation panel with safety shutdowns
- Special fuel filtration system for removing dirt and water from diesel fuel
- Diesel engine (Tier 3 rebuilt or Tier 4 new) or Electric motor options available

Options:

- Increased fuel capacity
- Vacuum pump upgrade
- "Whisper Pack" full or partial enclosures
- Engines: Deutz, John Deere, Hatz, Kohler, or Perkins (additional engines available upon request)
- Trailer mounted: Highway wheels / tires, Torsion bar axle, DOT light kit, Highway fenders, Tow hitch, and Brake kit available
- Camlock or Bauer type suction and discharge fittings (please consult CDPW for additional fittings)

CDPW Vacuum Assisted Wellpoint Pumps

